

90 DAY LIMITED WARRANTY

Product warranty extends to the original consumer purchaser of the product for 90 days from date of original purchase date.

Warranty Coverage: This product is warranted against defective materials or workmanship. The product must be used in complete accordance with the instructions as set forth in this Owner's Manual. Failure to comply strictly with the instructions as set forth in this manual will void this warranty in its entirety. Any part which fails in normal home use will be repaired or replaced free of charge when the product is returned. The repaired or replacement product will be under warranty for the balance of the 90 day warranty period and an additional one month period. No charge will be made on such repair or replacement. Product repair or replacement as provided under the above warranty is our exclusive remedy.

This warranty does not cover damage resulting from any of the following:

- Use contrary to operating instructions
- Misuse, abuse, negligent use or unreasonable use of the product, or accidents
- The attachment of any unauthorized accessory
- Alteration of re-usable components including but not limited to the following: wand(s), wand tip(s), Crystal Capsule(s), Deposit Chamber(s).
- Commercial use
- Incorrect electrical current, voltage or supply
- Improper service, disassembly, repair, or alteration by any person other than our factory service center
- Other causes not arising from defects in materials or workmanship

This warranty is effective only if the product is purchased and operated in the USA, and does not extend to any units which have been used in violation of written instructions, or to units which have been altered or modified or to products that have had the serial number removed, altered, defaced or rendered illegible.

Warranty Disclaimer: This warranty is in lieu of all warranties expressed or implied and no representative or person is authorized to assume any other liability in connection with the sale of our products. There shall be no claims for defects or failure of performance or product failure under any theory of tort, contract or commercial law, including but not limited to negligence, gross negligence, strict liability, breach of warranty and breach of contract. BioRenew Labs, LLC. shall not be responsible for any type of incidental, consequential or special damages.

This warranty gives you specific legal rights, and you may also have other rights, which vary state to state. This warranty supersedes all prior warranties.

How to Receive Warranty Service: To qualify for warranty service you must (a) notify the company at the call number below, (b) give the model number and serial number of the product, and (c) a clear description of the nature of the defect in product or part. At the time of requesting warranty service, you must present evidence of the original purchase date (sales receipt). Your name, address and telephone number will also be needed. We recommend that you keep all original packaging materials in the event that you need to ship the product back.

Read the Troubleshooting Guide prior to contacting Customer Support or requesting warranty service as problem can often be simply remedied. For Customer Support Call: 1-866-754-6300, visit www.crystalift.com or Contact your retailer directly.



Congratulations on the purchase of your Crystalift! Start Crystalift and start improving the appearance of:

- Brown Spots
- Age Spots
- Fine Lines & Wrinkles
- Blackheads
- Pore Size
- Hyper/Hypopigmentation
- Skin Tone & Texture

.... and more!

Table of Contents

Important Safety Information	1-2
Precautions	2
Operating Crystalift	
Your Crystalift Contains	3
How Does Crystalift Work?	4
Setting Up Crystalift	4
Treatments As Easy As 1-2-3	5-6
Frequently Asked Questions	7-8
Troubleshooting	9
Care & Cleaning	10
Product Specifications	10
Warranty.....	11

To Reorder Crystal Capsules:

Contact your retailer or for customer assistance call us directly at: 1-866-754-6300
www.crystalift.com

BioRenew Labs, LLC.

© 2004. All Rights Reserved.



The following instructions are based on safety considerations and must be followed to eliminate the risk of personal injury. If any adverse skin reaction should occur, discontinue use and consult your physician immediately. You should always consult a physician before starting any new skin care regimen.

READ ALL INSTRUCTIONS BEFORE USING

DANGER- To reduce risk of electrocution:

1. ALWAYS UNPLUG THIS PRODUCT IMMEDIATELY AFTER USING.
2. DO NOT USE WHILE BATHING .
3. DO NOT PLACE OR STORE PRODUCT WHERE IT CAN FALL OR BE PULLED INTO A TUB OR SINK.
4. DO NOT PLACE IN OR DROP INTO WATER OR OTHER LIQUID.
5. DO NOT REACH FOR PRODUCT THAT HAS FALLEN INTO WATER. UNPLUG IMMEDIATELY.
6. TWO-WIRE POLARIZED ATTACHMENT PLUG- THIS APPLIANCE HAS A POLARIZED PLUG (ONE BLADE IS WIDER THAN THE OTHER). AS A SAFETY FEATURE THIS PLUG WILL FIT IN A POLARIZED OUTLET ONLY ONE WAY. IF THE PLUG DOES NOT FIT FULLY IN THE OUTLET, REVERSE THE PLUG. IF IT STILL DOES NOT FIT, CONTACT A QUALIFIED ELECTRICIAN. **DO NOT ATTEMPT TO DEFEAT THIS SAFETY FEATURE.**
7. DO NOT USE PRODUCT ON WET SURFACES, NEAR WATER OR IMMERSE ANY PART OF PART IN WATER. NEVER SPILL ANY LIQUID ON CRYSTALIFT.

WARNING- To reduce risk of burns, electrocution, fire, or injury to persons:

1. PRODUCT SHOULD NEVER BE LEFT UNATTENDED WHEN PLUGGED IN.
2. CLOSE SUPERVISION IS NECESSARY WHEN PRODUCT IN USE BY, ON, OR NEAR CHILDREN OR INVALIDS. CRYSTALIFT IS NOT FOR USE BY CHILDREN UNDER 18 YEARS OF AGE. CRYSTALIFT IS NOT A TOY; DO NOT ALLOW CRYSTALIFT TO BE USED AS A TOY.
3. USE THIS PRODUCT ONLY FOR ITS INTENDED USE AS DESCRIBED IN THIS MANUAL. DO NOT USE ATTACHMENTS NOT RECOMMENDED BY MANUFACTURER. ONLY USE "UNTAMPERED" CRYSTAL CAPSULES, DEPOSIT CHAMBERS, TUBES, AND ATTACHMENTS FROM BIORENEW LABS, LLC..
4. NEVER OPERATE THIS PRODUCT IF IT HAS A DAMAGED CORD OR PLUG, IF IT IS NOT WORKING PROPERLY, IF IT HAS BEEN DROPPED OR DAMAGED OR DROPPED INTO WATER. RETURN THE PRODUCT TO A SERVICE CENTER FOR EXAMINATION AND REPAIR.
5. KEEP THE CORD AWAY FROM HEATED SURFACES.
6. DO NOT USE CRYSTALIFT WITH DAMAGED CORD OR PLUG. DO NOT USE CRYSTALIFT WITH AN EXTENSION CORD.
7. NEVER BLOCK THE AIR OPENINGS OF THE PRODUCT OR PLACE IT ON A SOFT SURFACE, SUCH AS A BED OR COUCH WHERE THE AIR OPENINGS MAY BE BLOCKED. KEEP THE AIR OPENING FREE OF DUST, LINT, HAIR AND THE LIKE.
8. NEVER USE WHILE SLEEPING OR DROWSY.
9. NEVER DROP OR INSERT ANY OBJECT INTO ANY OPENING OR HOSE.
10. DO NOT USE OUTDOORS OR OPERATE WHERE AEROSOL (SPRAY) PRODUCTS ARE BEING USED OR WHERE OXYGEN IS BEING ADMINISTERED.
11. TURN OFF CRYSTALIFT BEFORE UNPLUGGING. ALWAYS UNPLUG CRYSTALIFT WHEN NOT IN USE. TO UNPLUG, GRASP THE PLUG, NOT THE CORD. NEVER HANDLE PLUG OR CRYSTALIFT WITH WET HANDS.

WHEN NOT IN USE, STORE CRYSTALIFT IN A CLEAN DRY PLACE, KEEP CORD AWAY FROM WATER.

SAVE THESE INSTRUCTIONS!

1. Unplug CrystaLift when not in use. **Discard** the used Crystal Capsule when empty. **Discard** the Deposit Chamber after 4 treatments.
2. **Unplug CrystaLift** to clean and use a slightly damp sponge to wipe the outside and inside under the lid. Do not attempt to open the capsules/chambers or the system itself. Never allow CrystaLift to come into contact with water while plugged into the wall socket.
3. Clean the tip of the wand with a cotton swab and alcohol.

PRODUCT SPECIFICATIONS

Power Consumption: 1.6 amp 60 Watt

Power Supply: 110V/60hz

Dimensions: 5 X 9 X 7.5 (w)(d)(h)

Mass (Weight): 4.25 lbs.

Your Crystalift Contains:

**CRYSTAL CAPSULES
(4 included):**

The smaller **disposable** Crystal Capsule is positioned in the front panel of your Crystalift. Each capsule is filled with all natural mineral crystals that are water-soluble and designed to safely, gently and effectively exfoliate the skin. **USE one Crystal Capsule per week for face & neck area.** You may use an additional capsule per week if you also wish to treat other areas such as arms and legs.

**CRYSTALIFT DVD**

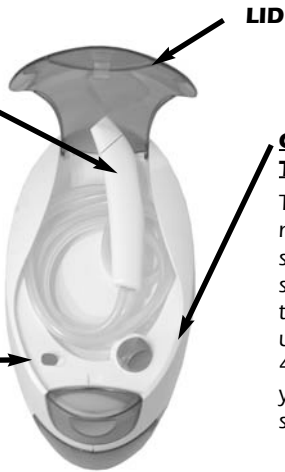
A step by step instructional DVD to maximize the benefits of your treatments.

**DEPOSIT CHAMBER
(1 included):**

The larger **disposable** Deposit Chamber is positioned below the Crystal Capsule. It contains a micro-filtration system used to neatly collect used crystals and skin debris during treatments. **Discard when full** (after you have used all 4 Crystal Capsules). This Deposit Chamber will last for a complete month's series of treatments (4 Crystal Capsules).

CRYSTALIFT WAND

The Crystalift wand delivers the crystal treatment to your skin. It is designed to sit comfortably in your hand for an effective treatment. It tucks neatly back inside Crystalift when not in use.

**ON/OFF**

Turn the power on using the on/off switch located on the left side of the front panel. *It is normal to hear a low humming noise.*

COMFORT CONTROL KNOB

This knob is located next to the on-off switch and it is used to set the strength of the treatment. You can use strengths 1 (low) to 4 (high) depending on your comfort level and skin sensitivity.

Should I apply pressure when treating myself with Crystalift?

No pressure is needed. Just be sure the wand has full contact with your skin. (See page 5 photos)

Are there areas where I should NOT treat myself with Crystalift?

Do not use on sensitive tissue areas including but limited to: underneath the eye area, eyelids, and lips.

How often do I need to replace the Crystal Capsules and Deposit Chamber?

Use one Crystal Capsule per week. Replace it with a fresh one every week to ensure that you are getting a sterile treatment and using the appropriate amount of crystals. You will need to replace the Deposit Chamber monthly. Each series comes with 4 Crystal Capsules and 1 Deposit Chamber which is a month's supply.

How do I reorder Crystal Capsules?

Contact the retailer where you bought your Crystalift to order more crystal capsules. You may also visit us online at www.crystalift.com or call our customer service line directly at 1-866-754-6300.

Can anyone use Crystalift?

Crystalift should not be used by anyone under 18. Should anyone under 18 use Crystalift, adult supervision is required. Please review Precautions listed on page 2 of this manual.

Is it normal to have crystal residue on my clothes or skin after a treatment?

Yes, some crystal residue is perfectly normal. Simply dust off with a towel and rinse down the sink. The residue left on your face serves as a guide indicating the areas that have been treated. Just rinse the crystal residue off with warm water.

What should I do if I get crystal residue in my eyes or mouth?

Turn Crystalift off and simply flush your eyes or mouth with water. The mineral crystals are designed to disintegrate in water for your safety. If irritation persists, seek medical attention immediately.

How often do I need to clean the wand?

Clean the tip of the wand with rubbing alcohol and a cotton swab after each use, especially if you wish to share your Crystalift with others in your household.

Can I use my skin care products with the Crystalift Microderm System?

Yes, however be mindful of any ingredients that could irritate the skin. Do not use in conjunction with products that exfoliate the skin including but not limited to: Retina A, Glycolics, or Alpha Hydroxy Acid. We recommend you consult your physician before using other products with this treatment.

BEFORE CALLING CUSTOMER SERVICE, CHECK THE FOLLOWING:

PROBLEM	POSSIBLE CAUSES	WHAT TO DO
No Power	Crystalift is not firmly plugged into wall socket.	Check to see if cord is firmly plugged in.
	On/Off switch is in "off" position	Move switch to "on" position.
No Crystal Flow	Tip of the wand is not creating a complete seal against the skin	Ensure tip of the wand is flush against the skin during treatment. (see page 5 photos)
	Vacuum connections are not firmly sealed	Press firmly at the tube connection under the lid, press in Crystal Capsule and Deposit Chamber.
	Comfort Control Knob is set too low	Turn Comfort Control Knob clockwise for higher vacuum pressure.
	Deposit Chamber is full preventing vacuum flow	Remove, discard and replace full Deposit Chamber with a fresh one.
	Old crystals have clogged the Crystal Capsule	Inspect the Crystal Capsule and look for any clumps of crystals, <i>shake</i> the capsule a few times to displace the block. If that doesn't work, replace with a fresh Crystal Capsule .
	Old crystals have clogged the Deposit Chamber	Remove the Deposit Chamber and inspect the top for any crystals that may be blocking the opening. Shake to displace the block, or tap chamber over your sink to remove the block.
	Tip of the wand is clogged	Inspect inside of tip and use a dry cotton swap to remove any excess crystals from the tip of the wand.
Treatment Too Aggressive	Comfort Control Knob is set too high	Adjust Comfort Control Knob located on front panel counter-clockwise to a lower setting.
	You are not using quick enough strokes across your skin	Increase the speed with which you are using the wand on your skin and ALWAYS KEEP THE WAND MOVING . Remember to lift in between passes.
Can't Insert Deposit Chamber	The Crystal Capsule is inserted in the front panel of your Crystalift	Remove the Crystal Capsule . Then insert the Deposit Chamber first before you re-insert the Crystal Capsule .
Crystals Ran Out	You moved the wand too slow and/or had the setting too high during treatment	Move wand quicker across your skin during treatment and/or adjust the Comfort Control Knob lower (counter-clockwise).
Crystals on my clothes	It is normal to have some residue on clothes and countertop.	Simply dust off and rinse any residue down the sink. This is normal and safe.

CAUTION: To reduce the risk of improper use or injury:

- DO NOT USE CRYSTALIFT IN CONJUNCTION WITH ANY PRESCRIPTION OR OVER THE COUNTER ACNE MEDICATION, ORAL BLOOD THINNERS, OR IF YOU HAVE RECENTLY HAD PLASTIC SURGERY, A CHEMICAL PEEL, LASER SURGERY OR ANY OTHER PROFESSIONAL TREATMENT. DO NOT USE IN CONJUNCTION WITH ANY OTHER EXFOLIATOR.
- DO NOT TURN ON CRYSTALIFT WITHOUT THE DEPOSIT CHAMBER FIRMLY IN PLACE.
- ALWAYS TURN CRYSTALIFT OFF BEFORE CONNECTING OR DISCONNECTING CRYSTAL CAPSULES, DEPOSIT CHAMBER, OR TUBES. NEVER ALLOW CRYSTALIFT TO RUN UNATTENDED.
- WHEN USING CRYSTALIFT ALWAYS KEEP THE TIP OF THE WAND MOVING ON THE SKIN.** NEVER ALLOW IT TO REST IN ONE LOCATION.
- USE AS DIRECTED TO AVOID OVER TREATMENT OR INJURY. AGGRESSIVE OVER TREATMENT MAY CAUSE SKIN IRRITATION. STOP USE IMMEDIATELY IF THIS OCCURS. **DO NOT USE MORE THAN ONE CAPSULE ON FACE & NECK AREA PER WEEK.**
- REFRAIN FROM RUBBING EYES AFTER USE, UNTIL FACE AND HANDS HAVE BEEN RINSED FREE OF CRYSTAL PARTICLES. IN CASE OF CRYSTAL CONTACT WITH EYES, FLUSH WITH WATER IMMEDIATELY. IF IRRITATION PERSISTS CONSULT A PHYSICIAN IMMEDIATELY.
- DO NOT USE CRYSTALIFT ON MOUTH, LIPS, EYES (UNDER EYE TISSUE/ EYELID AREAS).**
- DO NOT INGEST CRYSTALS. IF YOU DO, CONTACT YOUR PHYSICIAN IMMEDIATELY.
- IT IS ESPECIALLY IMPORTANT TO PROTECT SKIN WHILE USING CRYSTALIFT BY APPLYING SUN PROTECTION DAILY AND AVOIDING EXPOSURE TO THE SUN'S HARMFUL RAYS.**



Conditions where treatments should be avoided:

People with life threatening illnesses (for example: cancer, diabetes, hemophilia, etc) should not use Crystalift. You should not treat skin growth, skin disease or abnormalities under any circumstances. If you have any concerns regarding your health, consult your physician before using this or any other skin care product. Skin conditions considered inappropriate for treatment include but are not limited to the following:

- Skin Cancer
- Eczema
- Warts
- Active/Recent Herpes Outbreak
- Liver spots
- Birth marks
- Open wounds
- Impetigo
- Systemic Lupus
- Dermatitis
- Auto-immune Systems Diseases
- Sunburned or Chapped Skin
- Active Rosacea
- Broken Capillaries
- Active Acne
- Uncontrolled/Unstable Diabetes
- Undiagnosed Lesions
- Telangectasias
- Angioma
- Moles
- Hepatitis A, B, or C
- Erythematosis
- Heavily Pigmented Tattoos
- Viral or Undiagnosed Lesions
- Accutane, Retina A, Retinol Use
- Use of Alpha Hydroxy Acid, Glycolic or any other exfoliating product.

Treatments As Easy As

1 2 3

Refer to DVD for more detail.

1 PREPARE

Prepare your skin by cleansing to remove any dirt, oil and make-up before each treatment. Be sure to pat your face until it is completely dry before you begin. Gently secure hair away from your face.

2 TREAT

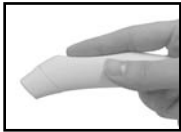
Use one capsule per week for face and neck. If you wish to treat an additional area such as arms or legs, you may use another capsule .

CAUTION: Always consult your physician before starting any new skin care regimen.



- 1. OPEN LID AND TURN ON:** Turn Crystalift to the "On" position. You will hear a slight humming sound which is normal.

CAUTION: DO NOT leave Crystalift turned "On" unattended.



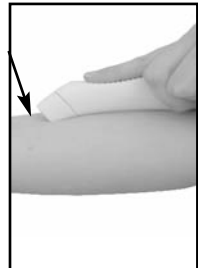
- 2. PICK UP WAND:** Hold wand comfortably in your hand as if it were a pencil.



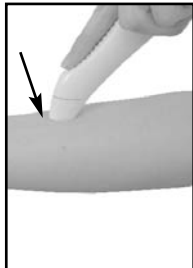
- 3. TEST STRENGTH:** Always start with the Comfort Control Knob at Level 1 (the lowest setting) by turning the knob all the way counter-clockwise. During treatment, you may want to vary strength.

CAUTION: Always turn down Comfort Control Knob if you feel any discomfort during treatment.

IMPORTANT: You must ALWAYS hold the wand so the tip is in complete contact with your skin for Crystalift to work properly. (see photos below)



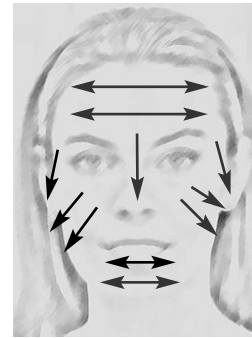
INCORRECT



CORRECT

Test Skin Sensitivity: Move the wand along the inside of your lower arm. You will see white crystal residue as you move the wand along your skin. This indicates the Crystalift treatment. The sensation should feel slightly abrasive, but **SHOULD NEVER** hurt or be uncomfortable.

CAUTION: Discontinue immediately if you feel any pain or discomfort.



- 4. TREATMENT:** The arrows on this facial diagram indicate the optimal and safest method of moving the wand over the skin surface. Treatment times vary but should take less than 10 min.

CAUTION: ALWAYS keep the wand moving continually covering new areas. Never keep the wand in one spot or apply pressure.

Begin With Chin Area: Make sure the tip of the wand is in complete contact with the skin (See page 5 photos) and is in constant motion. Move the wand in continual smooth, horizontal strokes across your skin. Do not keep going over the same spots and do not apply pressure. You will see a slight crystal residue on your face. This helps indicate areas you have treated. As you continue your treatment you will notice the crystal level depleting in the Crystal Capsule like an hourglass.

Continue treating your forehead and both left and right sides of your face. You may also treat your nose, neck, decollete and hands.



CAUTION: DO NOT TREAT the sensitive areas around the eye socket, lips and areas of broken blood vessels. If you get crystal residue in your eyes or mouth - flush immediately with warm water. Contact physician if irritation continues.

CAUTION: You don't have to use all of the crystals in each Crystal Capsule, but do not use more than one Crystal Capsule per week on your face and neck area.

3 POST TREATMENT

When finished, turn Crystalift off. Rinse crystal residue off with warm water and apply your moisturizer to nourish the skin. Dust off any crystal residue from counter top or clothes and rinse down sink. Remove and discard the empty Crystal Capsule each week and the full Deposit Chamber when full (each month).

Discard
Crystal
Capsule
(1 use)Discard
Deposit
Chamber
(4 uses)

CAUTION: Remember, exfoliation leaves skin vulnerable to sun damage so take extra precaution to **use a high SPF Sunblock/sunscreen everyday** to protect your skin from the harmful effects of the sun.

How often should I use Crystalift?

For optimal results, use one Crystal Capsule a week to regenerate a healthy-looking, youthful glow. Although there is no downtime with Crystalift, DO NOT use more than 1 capsule a week on your face and neck, as excessive use may be harmful to your skin. You may however use a new capsule if you wish to treat another area in addition to your face & neck such as arms, legs etc.

How long should a Crystalift treatment last?

Treatment times vary per individual but typical length is less than 10 minutes.

What should my skin look like right after a Crystalift treatment?

Most people will feel an immediate difference in their skin's texture and have a noticeable glow after the very first treatment. A slight blush or redness may appear and should disappear within a day or so. If irritation persists, seek medical attention immediately. Individual results may vary.

When will I see results?

Individual results may vary. Some people will see a difference after their very first treatment. However, results improve with proper use and continual treatments.

Is Crystalift right for my skin type and tone?

Crystalift can be used on all skin types (dry, oily or combination skin) and also works on all skin tones (light, medium and dark). It is designed for anyone who wants to visibly reduce the appearance of fine lines, age spots, sun damage and blemishes. It is recommended that you consult a physician before starting any new skin care regimen.

If I have moles, skin growths or skin problems, can I use Crystalift?

Do not use Crystalift on moles, active acne, eczema, rosacea broken capillaries or any other skin ailment. We strongly recommend you consult a physician before you begin any skin care treatment or products. Please review Precautions listed on page 2 of this manual.

Can I use Crystalift on other areas?

Crystalift can be effective on other parts of the body such as the neck, hands and décolleté. However, do not use on sensitive tissue areas and review all precautions as set forth in this manual.

How do I adjust the strength of my treatment?

To adjust the intensity of your treatment, open the lid and adjust the Comfort Control Knob (located on the right of the inside panel). We recommend you test the strength level on the inside of your arm (see page 5). If this is your first treatment, start with the lowest setting by turning the knob *counter-clockwise*.

Should I feel any discomfort during a treatment?

NO! Crystalift should be gentle and painless. If you do feel any discomfort, adjust the Comfort Control Knob *counter-clockwise* to a lesser strength. Make sure you are constantly moving the wand during your treatment. Do not apply pressure. If you do feel any pain, discontinue use immediately.

How Does Crystalift Work?

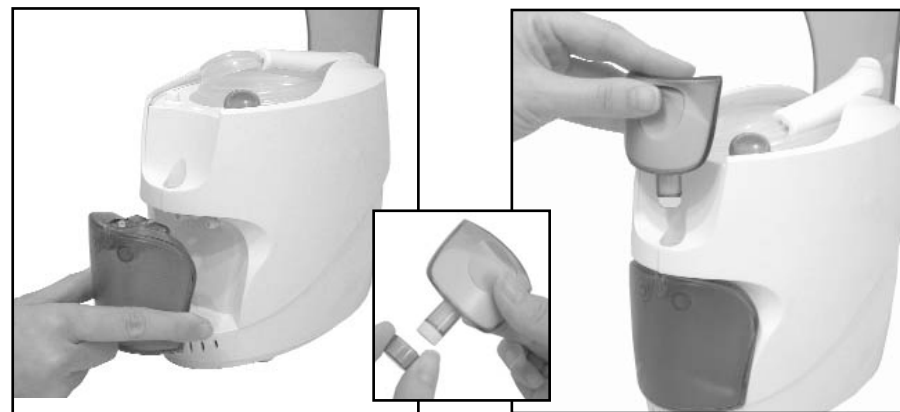
Crystalift is a safe and effective treatment using professional resurfacing technology. It incorporates vacuum therapy to send a stream of all natural mineral crystals from the wand to gently exfoliate the older, dead skin cells and encourage younger, healthier cells to surface. The Crystalift process leaves your skin smoother, softer and more radiant.

Crystalift's unique patented design allows for ease of use and guaranteed performance. **The crystal flow does not start until the wand has made full contact with the skin.** (See photos page 5). This safety feature keeps crystals from coming out of the tip until *you* are ready for your treatment, thereby delivering a comfortable, safe treatment and minimizing unnecessary waste. However, there may be some crystal residue on clothes or counter top. This is perfectly normal, simply dust off and rinse down the sink.

WEEKLY USE: It is recommended that you use **one Crystal Capsule a week** to maximize the benefits of Crystalift treatments and maintain your radiant glow. Under no circumstances should you **use more than 1 Crystal Capsule per week**.

Setting up Crystalift:

Secure Crystalift on a clean, dry surface.



Remove cap

- FIRST:** Insert the **Deposit Chamber** into the bottom front space of your Crystalift by pressing it in firmly. You should hear a slight click when in place. The chamber should be flush with the front of the system. **Deposit Chamber must be inserted before the Crystal Capsule.**
- SECOND:** Remove plastic cap and shake the Crystal Capsule for 5 seconds before inserting. **OPEN LID:** Insert **Crystal Capsule** directly above the Deposit Chamber. The capsule should be flush with the front of the system. Press it in firmly. Plug Crystalift into a standard 120-volt outlet.